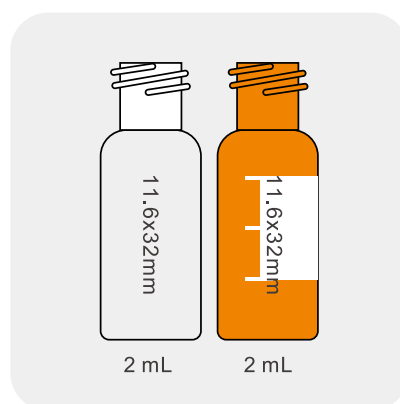


8-425 Screw-Thread Vials

8-425 Screw-Thread Vials are the original smaller-opening autosampler vials that are designed to work with a variety of autosamplers requiring narrow-neck vials.

Specifications:

- Material: USP Type 1 borosilicate glass
- Total volume: 2.0 mL
- Recommended fill: 1.5 mL
- Dimensions: 11.6*32 mm
- Openings: 8-425 screw top
- Bottom style: flat bottom



Ordering Information

8-425 Screw-Thread Vials

Cat. #	Description	Capacity	O.D.xL	Color	Qty.
V1-T	Screw-thread vials	2 mL	11.6x32 mm	Clear	100 Pcs/Box
V1-TL	Screw-thread vials with write-on spot	2 mL	11.6x32 mm	Clear	100 Pcs/Box
V1-A	Screw-thread vials	2 mL	11.6x32 mm	Amber	100 Pcs/Box
V1-AL	Screw-thread vials with write-on spot	2 mL	11.6x32 mm	Amber	100 Pcs/Box

Caps with septa for 8-425 screw-thread vials

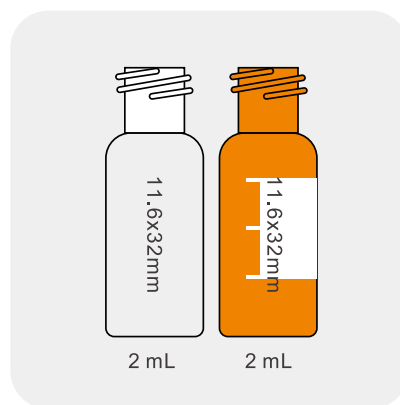
Cat. #	Description	Qty.
SC1-1	Black polypropylene screw caps with white PTFE/red silicone septa, 5.5mm hole	100 Pcs/Box
SC1-2	Black polypropylene screw caps with red PTFE/white silicone septa, 5.5mm hole	100 Pcs/Box
SC1-3	Black polypropylene screw caps with red PTFE/white silicone/red PTFE septa, 5.5mm hole	100 Pcs/Box
SC1-4	Black polypropylene screw caps with blue PTFE/white silicone septa, 5.5mm hole	100 Pcs/Box
SC1-5	Black polypropylene screw caps with pre-slit white PTFE/red silicone septa, 5.5mm hole	100 Pcs/Box
SC1-6	Black polypropylene screw caps with pre-slit red PTFE/white silicone septa, 5.5mm hole	100 Pcs/Box
SC1-7	Black polypropylene screw caps with pre-slit blue PTFE/white silicone septa, 5.5mm hole	100 Pcs/Box
SC1-8	White polypropylene screw caps with white PTFE/red silicone septa, 5.5mm hole	100 Pcs/Box
SC1-9	White polypropylene screw caps with red PTFE/white silicone septa, 5.5mm hole	100 Pcs/Box
SC1-10	White polypropylene screw caps with blue PTFE/white silicone septa, 5.5mm hole	100 Pcs/Box
SC1-11	White polypropylene screw caps with pre-slit white PTFE/red silicone septa, 5.5mm hole	100 Pcs/Box
SC1-12	White polypropylene screw caps with pre-slit red PTFE/white silicone septa, 5.5mm hole	100 Pcs/Box
SC1-13	White polypropylene screw caps with pre-slit blue PTFE/white silicone septa, 5.5mm hole	100 Pcs/Box

9-425 Screw-Thread Vials

9-425 Screw-Thread Vials are dimensionally equivalent to 11mm crimp top vials. Therefore, they can be used in any autosampler that are designed for 11mm crimp top vials. 9-425 Screw-thread vials give excellent sealing as well as the ease of applying and removing by hand.

Specifications:

- Material: USP Type 1 borosilicate glass
- Total volume: 2.0 mL
- Recommended fill: 1.5 mL
- Dimensions: 11.6*32 mm
- Openings: 9-425 screw top
- Bottom style: flat bottom



Ordering Information

9-425 Screw-Thread Vials

Cat. #	Description	Capacity	O.D.xL	Color	Qty.
V2-T	Screw-thread vials	2 mL	11.6x32 mm	Clear	100 Pcs/Box
V2-TL	Screw-thread vials with write-on spot	2 mL	11.6x32 mm	Clear	100 Pcs/Box
V2-A	Screw-thread vials	2 mL	11.6x32 mm	Amber	100 Pcs/Box
V2-AL	Screw-thread vials with write-on spot	2 mL	11.6x32 mm	Amber	100 Pcs/Box

Caps with septa for 9-425 screw-thread vials

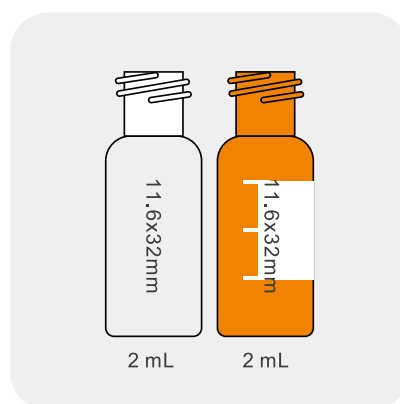
Cat. #	Description	Qty.
C2-1	Blue polypropylene screw caps, 6mm hole	100 Pcs/Box
C2-2	Blue polypropylene screw caps, closed top	100 Pcs/Box
SC2-1	Blue polypropylene screw caps with white PTFE/red silicone septa, 6mm hole	100 Pcs/Box
SC2-2	Blue polypropylene screw caps with red PTFE/white silicone septa, 6mm hole	100 Pcs/Box
SC2-3	Blue polypropylene screw caps with red PTFE/white silicone/red PTFE septa, 6mm hole	100 Pcs/Box
SC2-4	Blue polypropylene screw caps with blue PTFE/white silicone septa, 6mm hole	100 Pcs/Box
SC2-5	Blue polypropylene screw caps with pre-slit white PTFE/red silicone septa, 6mm hole	100 Pcs/Box
SC2-6	Blue polypropylene screw caps with pre-slit blue PTFE/white silicone septa, 6mm hole	100 Pcs/Box

10-425 Screw-Thread Vials

10-425 Screw-Thread Vials feature a wider opening than other screw-thread vials. The increased target area makes sample injection easier and reduces the chances of bending or breaking needles during sampling.

Specifications:

- Material: USP Type 1 borosilicate glass
- Total volume: 2.0 mL
- Recommended fill: 1.5 mL
- Dimensions: 11.6*32 mm
- Openings: 10-425 screw top
- Bottom style: flat bottom



Ordering Information

10-425 Screw-Thread Vials

Cat. #	Description	Capacity	O.D.xL	Color	Qty.
V3-T	Screw-thread vials	2 mL	11.6x32 mm	Clear	100 Pcs/Box
V3-TL	Screw-thread vials with write-on spot	2 mL	11.6x32 mm	Clear	100 Pcs/Box
V3-A	Screw-thread vials	2 mL	11.6x32 mm	Amber	100 Pcs/Box
V3-AL	Screw-thread vials with write-on spot	2 mL	11.6x32 mm	Amber	100 Pcs/Box

Caps with septa for 10-425 screw-thread vials

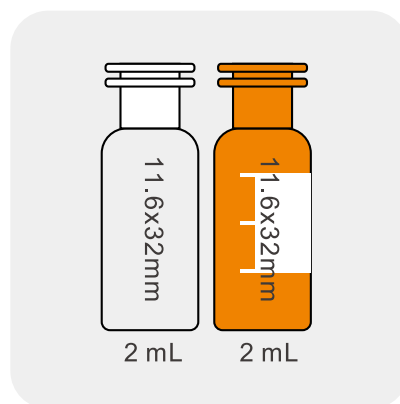
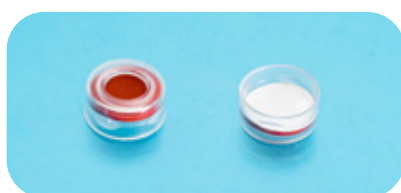
Cat. #	Description	Qty.
SC3-1	Black polypropylene screw caps with white PTFE/red silicone septa, 7mm hole	100 Pcs/Box
SC3-2	Black polypropylene screw caps with red PTFE/white silicone septa, 7mm hole	100 Pcs/Box

Snap-Top Vials

11mm Snap-Top Vials have good sealing to minimize evaporation, even with volatile samples. Compared to crimp-top vials, snap-top vials are more convenient because the caps can be easily applied and removed by hand. An audible click ensures that a secure seal has been formed and the cap has been correctly aligned. Snap-top vials can be capped with either snap caps or crimp caps.

Specifications:

- Material: USP Type 1 borosilicate glass
- Capacity: 2.0 mL
- Recommended fill: 1.5 mL
- Dimensions: 11.6*32 mm
- Openings: 11mm snap-top
- Bottom style: flat bottom



Ordering Information

11mm Snap-Top Vials

Cat. #	Description	Capacity	O.D.xL	Color	Qty.
V4-T	11mm snap-top vials	2 mL	11.6x32 mm	Clear	100 Pcs/Box
V4-TL	11mm snap-top vials with write-on spot	2 mL	11.6x32 mm	Clear	100 Pcs/Box
V4-A	11mm snap-top vial	2 mL	11.6x32 mm	Amber	100 Pcs/Box
V4-AL	11mm snap-top vials with write-on spot	2 mL	11.6x32 mm	Amber	100 Pcs/Box

Caps with septa for 11mm snap-top vials

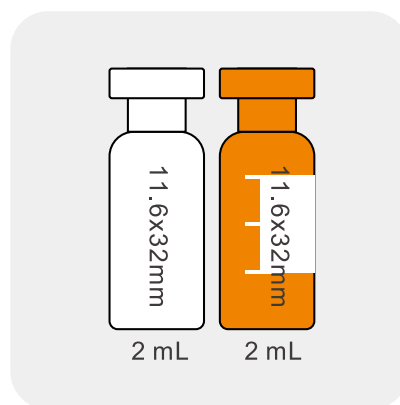
Cat. #	Description	Qty.
C4-1	Natural snap-top caps, 6mm hole	100 Pcs/Box
C4-2	Blue snap-top caps, 6mm hole	100 Pcs/Box
C4-3	Red snap-top caps, 6mm hole	100 Pcs/Box
SC4-1	Natural snap-top caps with white PTFE/red silicone septa, 6mm hole	100 Pcs/Box
SC4-2	Natural snap-top caps with red PTFE/white silicone/red PTFE septa, 6mm hole	100 Pcs/Box
SC4-3	Natural snap-top caps with blue PTFE/white silicone septa, 6mm hole	100 Pcs/Box
SC4-4	Blue snap-top caps with white PTFE/red silicone septa, 6mm hole	100 Pcs/Box
SC4-5	Blue snap-top caps with red PTFE/white silicone septa, 6mm hole	100 Pcs/Box
SC4-6	Red snap-top caps with white PTFE/red silicone septa, 6mm hole	100 Pcs/Box
SC4-7	Red snap-top caps with red PTFE/white silicone septa, 6mm hole	100 Pcs/Box
SC4-8	Natural snap-top caps with red PTFE/white silicone septa, 6mm hole	100 Pcs/Box
SC4-9	Red snap-top caps with red PTFE/white silicone/red PTFE septa, 6mm hole	100 Pcs/Box
SC4-10	Red snap-top caps with pre-slit blue PTFE/white silicone septa, 6mm hole	100 Pcs/Box

Crimp-Top Vials

Crimp-Top Vials provide very excellent seal, reducing the chance of sample evaporation. These vials and 11mm aluminum crimp caps can be economically and easily used with crimping tools.

Specifications:

- Material: USP Type 1 borosilicate glass
- Capacity: 2.0 mL
- Recommended fill: 1.5 mL
- Dimensions: 11.6*32 mm
- Openings: 11mm crimp-top
- Bottom style: flat bottom



Ordering Information

11mm Crimp-Top Vials

Cat. #	Description	Capacity	O.D.xL	Color	Qty.
V5-T	11mm crimp-top vials	2 mL	11.6x32 mm	Clear	100 Pcs/Box
V5-TL	11mm crimp-top vials with write-on spot	2 mL	11.6x32 mm	Clear	100 Pcs/Box
V5-A	11mm crimp-top vial	2 mL	11.6x32 mm	Amber	100 Pcs/Box
V5-AL	11mm crimp-top vials with write-on spot	2 mL	11.6x32 mm	Amber	100 Pcs/Box

Aluminum caps with septa for crimp-top vials

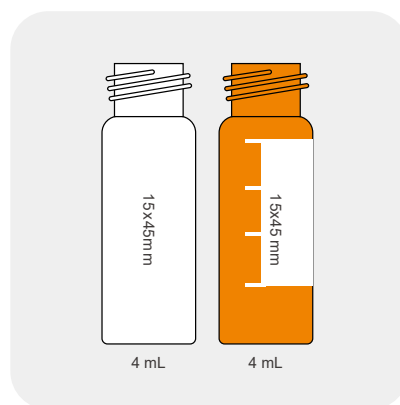
Cat. #	Description	Qty.
C5-1	Crimp-top aluminum caps, 5.5mm hole	100 Pcs/Box
SC5-1	Crimp-top aluminum caps with white PTFE/red silicone septa, 5.5mm hole	100 Pcs/Box
SC5-2	Crimp-top aluminum caps with red PTFE/white silicone septa, 5.5mm hole	100 Pcs/Box
SC5-3	Crimp-top aluminum caps with red PTFE/white silicone/red PTFE septa, 5.5mm hole	100 Pcs/Box
SC5-4	Crimp-top aluminum caps with pre-slit white PTFE/red silicone septa, 5.5mm hole	100 Pcs/Box
SC5-5	Crimp-top aluminum caps with pre-slit red PTFE/white silicone septa, 5.5mm hole	100 Pcs/Box

13-425 Screw-Thread Vials

13-425 Screw-Thread Vials have excellent sealing properties to store sample, then transfer directly.

Specifications:

- Material: USP Type 1 borosilicate glass
- Total volume: 4.0 mL
- Dimensions: 15*45 mm
- Openings: 13-425 screw top
- Bottom style: flat bottom



Ordering Information

13-425 Screw-Thread Vials

Cat. #	Description	Capacity	O.D.xL	Color	Qty.
V6-T	Screw-thread vials	4 mL	15x45 mm	Clear	100 Pcs/Box
V6-TL	Screw-thread vials with write-on spot	4 mL	15x45 mm	Clear	100 Pcs/Box
V6-A	Screw-thread vials	4 mL	15x45 mm	Amber	100 Pcs/Box
V6-AL	Screw-thread vials with write-on spot	4 mL	15x45 mm	Amber	100 Pcs/Box

Caps with septa for 13-425 screw-thread vials

Cat. #	Description	Qty.
C6-1	Black propylene screw caps, 8.5mm hole	100 Pcs/Box
C6-2	Black propylene screw caps, closed top	100 Pcs/Box
SC5-1	Black propylene screw caps with white PTFE/red silicone septa, 8.5mm hole	100 Pcs/Box
SC5-2	Black propylene screw caps with red PTFE/white silicone septa, 8.5mm hole	100 Pcs/Box
SC5-3	Black propylene screw caps with red PTFE/white silicone/red PTFE septa, 8.5mm hole	100 Pcs/Box
SC5-4	Black propylene screw caps with natural PTFE/ natural silicone septa, 8.5mm hole	100 Pcs/Box
SC5-5	Black propylene screw caps with natural PTFE/ natural silicone septa, closed top	100 Pcs/Box

Screw-Thread Headspace Vials

18mm Precision Screw-Thread Headspace Vials have excellent sealing properties to store sample, then transfer directly.

Specifications:

- Material: USP Type 1 borosilicate glass
- Openings: 18mm precision screw-thread
- Bottom style: round bottom



Ordering Information

18mm Precision Screw-Thread Headspace Vials

Cat. #	Description	Capacity	O.D.xL	Color	Qty.
V7-10T	Precision screw-thread headspace vials	10 mL	22.5x46 mm	Clear	100 Pcs/Box
V7-10A	Precision screw-thread headspace vials	10 mL	22.5x46 mm	Amber	100 Pcs/Box
V7-20T	Precision screw-thread headspace vials	20 mL	22.5x75.5 mm	Clear	100 Pcs/Box
V7-20A	Precision screw-thread headspace vials	20 mL	22.5x75.5 mm	Amber	100 Pcs/Box

Aluminum caps with septa for 18mm precision screw-thread headspace vials

Cat. #	Description	Qty.
C7-1	aluminum caps, 8mm hole	100 Pcs/Box
SC7-1	aluminum caps with blue PTFE/white silicone septa, 8mm hole	100 Pcs/Box

Crimp-Top Headspace Vials

Crimp-top headspace vials, with aluminum caps, have excellent sealing properties which are suitable for using in headspace autosamplers.

Specifications:

- Material: USP Type 1 borosilicate glass
- Openings: crimp-top
- Bottom style: flat bottom



Ordering Information

Crimp-Top Headspace Vials

Cat. #	Description	Capacity	O.D.xL	Color	Qty.
V8-10T	11mm Crimp-top vial	10 mL	22.5x46 mm	Clear	100 Pcs/Box
V8-10A	11mm Crimp-top vial	10 mL	22.5x46 mm	Amber	100 Pcs/Box
V8-20T	11mm Crimp-top vials with write-on spot	20 mL	22.5x75.5 mm	Clear	100 Pcs/Box
V8-20A	11mm Crimp-top vials with write-on spot	20 mL	22.5x75.5 mm	Amber	100 Pcs/Box

Aluminum caps with septa for crimp-top headspace vials

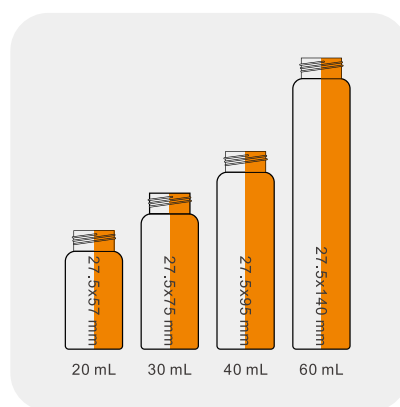
Cat. #	Description	Qty.
C8-1	Crimp-top aluminum caps, 10mm hole	100 Pcs/Box
SC8-1	Crimp-top aluminum caps with white PTFE/white silicone septa, 10mm hole	100 Pcs/Box
SC8-2	Crimp-top aluminum caps with natural PTFE/natural silicone septa, 10mm hole	100 Pcs/Box
SC8-3	Crimp-top aluminum caps with white PTFE/blue silicone septa, 10mm hole	100 Pcs/Box
SC8-4	Crimp-top aluminum caps with natural PTFE/yellow silicone septa, 10mm hole	100 Pcs/Box
SC8-5	Crimp-top aluminum caps with natural PTFE/blue silicone septa, 10mm hole	100 Pcs/Box

Storage Vials

These large volume vials are ideal for sample storage and general laboratory use.

Specifications:

- Material: USP Type 1 borosilicate glass
- Openings: screw-thread
- Bottom style: flat bottom



Ordering Information

Storage Vials

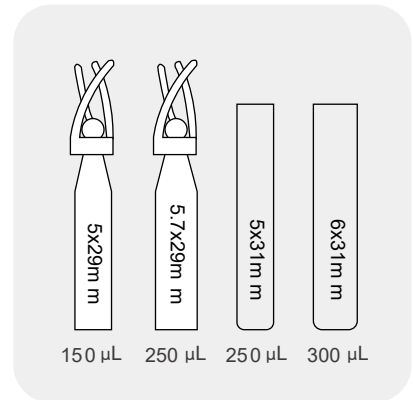
Cat. #	Description	Capacity	O.D.xL	Color	Qty.
V9-10A	Storage vials	10 mL	18.4x66 mm	Amber	100 Pcs/Box
V9-20A	Storage vials	20 mL	27.5x57 mm	Amber	100 Pcs/Box
V9-30A	Storage vials	30 mL	27.5x75 mm	Amber	100 Pcs/Box
V9-40A	Storage vials	40 mL	27.5x95 mm	Amber	100 Pcs/Box
V9-60A	Storage vials	60 mL	27.5x140 mm	Amber	100 Pcs/Box
V9-10T	Storage vials	10 mL	18.4x66 mm	Clear	100 Pcs/Box
V9-20T	Storage vials	20 mL	27.5x57 mm	Clear	100 Pcs/Box
V9-30T	Storage vials	30 mL	27.5x75 mm	Clear	100 Pcs/Box
V9-40T	Storage vials	40 mL	27.5x95 mm	Clear	100 Pcs/Box
V9-60T	Storage vials	60 mL	27.5x140 mm	Clear	100 Pcs/Box

Caps with septa for storage vials

Cat. #	Description	Qty.
SC9-1	White screw-thread caps with natural PTFE/natural silicone septa, 15mm hole	100 Pcs/Box
SC9-2	White screw-thread caps with natural PTFE/natural silicone septa, closed top	100 Pcs/Box
SC9-3	Black screw-thread caps with natural PTFE/natural silicone septa, 15mm hole	100 Pcs/Box
SC9-4	Black screw-thread caps with natural PTFE/natural silicone septa, closed top	100 Pcs/Box

Inserts

These micro-inserts can be used within 8-425 & 9-425 screw-thread vials and enable you to deal with micro-volume samples.



Ordering Information

Micro-Inserts

Cat. #	Description	Capacity	O.D.xL	Color	Qty.
SI-1	Glass inserts with mandrel interior and polypropylene feet, for 8-425 screw-thread vials	150 µL	5x29 mm	Clear	100 Pcs/Box
SI-2	Glass inserts with mandrel interior and polypropylene feet, for 9-425 screw-thread vials	250 µL	5.7x29 mm	Clear	100 Pcs/Box
SI-3	Flat-bottom glass inserts, for 8-425 screw-thread vials	250 µL	5x31 mm	Clear	100 Pcs/Box
SI-4	Flat-bottom glass inserts, for 9-425 screw-thread vials	350 µL	6x31 mm	Clear	100 Pcs/Box