

## Solid Phase Extraction (SPE) Cartridge Product List

SorbentPhase	Biocomma	Waters	Agilent	Phenomenex	Supelco	Agela
C18	Copure® C18	Sep-pak tC18	Bond Elut C18	Strata C18-E	Sepelclean ENVI-18	Cleanert C18
C18-Ne	Copure® C18-n	Sep-pak C18	Bond Elut C18OH	Strata C18-U		Cleanert C18-N
C8	Copure® C8	Sep-pak C8	Bond Elut C8	Strata C8	Sepelclean ENVI-8	Cleanert C8
CN	Copure® CN	Sep-pak CN	Bond Elut CN-E	Strata CN	Sepelclean LC-CN	Cleanert CN
NH2	Copure® NH2	Sep-pak NH2	Bond Elut NH2	Strata NH2	Sepelclean LC-NH2	Cleanert NH2
PSA	Copure® PSA		Bond Elut PSA	Strata PSA	Sepelclean PSA	Cleanert PSA
SAX	Copure® SAX		Bond Elut SAX	Strata SAX	Sepelclean LC-SAX	Cleanert SAX
SCX	Copure® SCX		Bond Elut SCX	Strata SCX	Sepelclean LC-SI	Cleanert SCX
Salica	Copure® Silica	Sep-pak SI	Bond Elut SI	Strata SI-I	Sepelclean LC-SCX	Cleanert Silica
HLB	Copure® HLB	Oasis HLB	Bond Elut Plexa	Strata-X	Supel-Select HLB	Cleanert PEP
HLB	Copure® HLB-lim	Oasis PRIME HLB				
MCX	Copure® MCX	Oasis MCX	Bond Elut Plexa PCX	Strata-XC	Supel-Select SCX	Cleanert PCX
MAX	Copure® MAX	Oasis MAX	Bond Elut Plexa PAX	Strata-XA	Supel-Select SAX	Cleanert PAX
Florisil	Copure® Florisil	Sep-pak FI	Bond Elut FL	Strata FR-PR	Sepelclean LC-Florisil	Cleanert Florisil
Graphitized Bond	Copure® Carb-GCB		Bond Elut Carbon		Sepelclean ENVI Carb	Cleanert PestiCarb
Alumina-N	Copure® ALN	Sep-pak Alumina-N	Bond Elut Alumina-N	Strata Alumina-N	Sepelclean LC-Alumina-N	Cleanert AluminaN
Alumina-A	Copure® ALA	Sep-pak Alumina-A	Bond Elut Alumina-A	Strata Alumina-A	Sepelclean LC-Alumina-A	Cleanert AluminaA
Alumina-B	Copure® ALB	Sep-pak Alumina-B	Bond Elut Alumina-B	Strata Alumina-B	Sepelclean LC-Alumina-B	Cleanert AluminaB
GCB/NH2	Copure® Carb-GCB/NH2		Bond Elut Carb/NH2		Sepelclean ENVI Carb/NH2	Cleanert PestiCarb/NH2
GCB/PSA	Copure® Carb-GCB/PSA		Bond Elut Carb/PSA		Sepelclean ENVI Carb-II/PSA	

# HLB Hydrophilic-Lipophilic Balanced

Extracting non-polar to moderately polar acidic, neutral and alkaline compounds

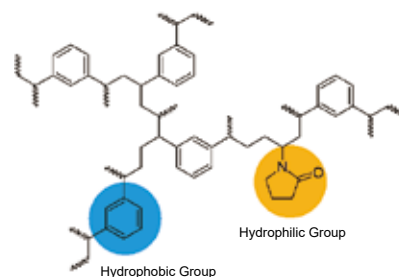
## Specifications

Surface area: 600 m<sup>2</sup>/g Particle size: 40 μm Pore size: 300 Å

## Ordering Information

Cat.#	Description	Qty.
COHLB130	30mg/1mL	100 Pcs/Box
COHLB360	60mg/3mL	50 Pcs/Box
COHLB3200	200mg/3mL	50 Pcs/Box
COHLB6150	150mg/6mL	30 Pcs/Box
COHLB6200	200mg/6mL	30 Pcs/Box
COHLB6500	500mg/6mL	30 Pcs/Box
COHLB12500	500mg/12mL	20 Pcs/Box

Note: equivalent to Waters Oasis HLB



# MAX Mixed-mode Anion Exchange

Extracting acidic compounds

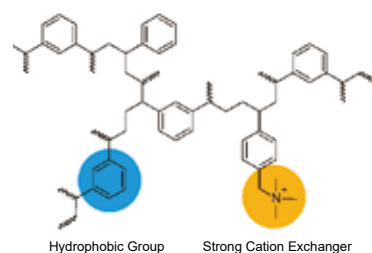
## Specifications

Surface area: 600 m<sup>2</sup>/g

## Ordering Information

Cat.#	Description	Qty.
COMAX130	30mg/1mL	100 Pcs/Box
COMAX360	60mg/3mL	50 Pcs/Box
COMAX3200	200mg/3mL	50 Pcs/Box
COMAX6150	150mg/6mL	30 Pcs/Box
COMAX6200	200mg/6mL	30 Pcs/Box
COMAX6500	500mg/6mL	30 Pcs/Box
COMAX12500	500mg/12mL	20 Pcs/Box

Note: equivalent to Waters Oasis MAX



# MCX Mixed-mode Cation Exchange

Extracting alkaline compounds

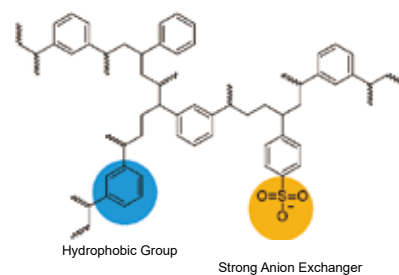
## Specifications

Surface area: 600 m<sup>2</sup>/g Particle size: 40 μm Pore size: 300 Å

## Ordering Information

Cat.#	Description	Qty.
COMCX130	30mg/1mL	100 Pcs/Box
COMCX360	60mg/3mL	50 Pcs/Box
COMCX3200	200mg/3mL	50 Pcs/Box
COMCX6150	150mg/6mL	30 Pcs/Box
COMCX6200	200mg/6mL	30 Pcs/Box
COMCX6500	500mg/6mL	30 Pcs/Box
COMCX12500	500mg/12mL	20 Pcs/Box

Note: equivalent to Waters Oasis MCX



## WCX Weak Cation Exchange

Extracting strong bases

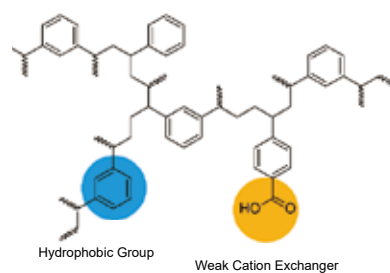
### Specifications

Surface area: 600 m<sup>2</sup>/g Particle size: 40 µm Pore size: 300 Å

### Ordering Information

Cat.#	Description	Qty.
COWCX130	30mg/1mL	100 Pcs/Box
COWCX360	60mg/3mL	50 Pcs/Box
COWCX3200	200mg/3mL	50 Pcs/Box
COWCX3500	500mg/3mL	50 Pcs/Box
COWCX6150	150mg/6mL	30 Pcs/Box
COWCX6200	200mg/6mL	30 Pcs/Box
COWCX6500	500mg/6mL	30 Pcs/Box

Note: equivalent to Waters Oasis WCX



## WAX Weak Anion Exchange

Extracting strong acids

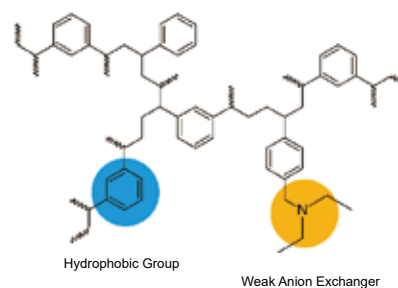
### Specifications

Surface area: 600 m<sup>2</sup>/g Particle size: 40 µm Pore size: 300 Å

### Ordering Information

Cat.#	Description	Qty.
COWAX130	30mg/1mL	100 Pcs/Box
COWAX360	60mg/3mL	50 Pcs/Box
COWAX3200	200mg/3mL	50 Pcs/Box
COWAX3500	500mg/3mL	50 Pcs/Box
COWAX6150	150mg/6mL	30 Pcs/Box
COWAX6200	200mg/6mL	30 Pcs/Box
COWAX6500	500mg/6mL	30 Pcs/Box

Note: equivalent to Waters Oasis WAX



# HLB Lim Cartridges for Multi-Residue Analysis of Veterinary Drug

HLB Lim cartridge is a new type of solid phase extraction column packed with special sorbent. Comparing to traditional SPE cartridges, it removes interfering substances such as fat, phospholipid and pigment faster to reduce matrix effect.

The HLB Lim Cartridge greatly simplifies the process of sample preparation. Activation and equilibration steps can be skipped. Filtering the sample directly after extraction saves a lot of time and reagents so that the sample preparation is simpler and more efficient.



## Features

- One step purification and shorter pretreatment time
- High recovery rate and good reproducibility.
- Suitable for multi-matrix and multi-residue analysis of veterinary drug.
- Save solvent and cost

## Typical Recovery

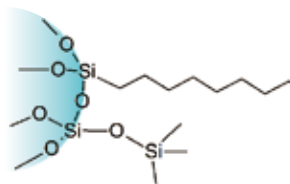
Compound	Recovery (%)
Tetracycline	97.7
Chlortetracycline	87.9
Oxytetracycline	87.7
Ractopamine	95.8
Salbutamol	108
Clenbuterol	91.6

## Ordering Information

Cat. #	Description	Qty.
COHLB3200-Lim	Copure® HLB Lim Cartridges,3 mL	50 Pcs/Box

## C8 Octyl

Extracting non-polar compounds



### Specifications

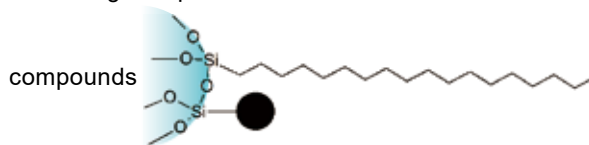
Carbon content: 9%      Surface area: 280 m<sup>2</sup>/g  
 Particle size: 40 - 75 μm      Pore size: 70 Å

### Ordering Information

Cat. #	Description	Qty.
COC81100	100mg/1mL	100 Pcs/Box
COC83200	200mg/3mL	50 Pcs/Box
COC83500	500mg/3mL	50 Pcs/Box
COC86500	500mg/6mL	30 Pcs/Box
COC861000	1000mg/6mL	30 Pcs/Box
COC8121000	1000mg/12mL	20 Pcs/Box
COC8122000	2000mg/12mL	20 Pcs/Box

## C18A Unendcapped Octadecyl

Extracting non-polar



### Specifications

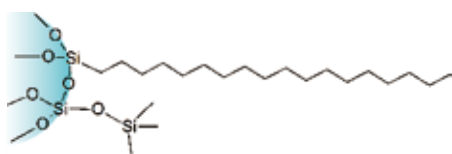
Carbon content: 12%      Surface area: 300 m<sup>2</sup>/g  
 Particle size: 40 - 75 μm      Pore size: 70 Å

### Ordering Information

Cat. #	Description	Qty.
COC18A1100	100mg/1mL	100 Pcs/Box
COC18A3200	200mg/3mL	50 Pcs/Box
COC18A3500	500mg/3mL	50 Pcs/Box
COC18A6500	500mg/6mL	30 Pcs/Box
COC18A61000	1000mg/6mL	30 Pcs/Box
COC18A121000	1000mg/12mL	20 Pcs/Box
COC18A122000	2000mg/12mL	20 Pcs/Box

## C18 Endcapped Octadecyl

Extracting non-polar compounds



### Specifications

Carbon content: 17.6%      Surface area: 300 m<sup>2</sup>/g  
 Particle size: 40 - 60 μm      Pore size: 70 Å

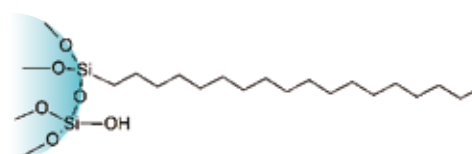
### Ordering Information

Cat.#	Description	Qty.
COC181100	100mg/1mL	100 Pcs/Box
COC18360	60mg/3mL	50 Pcs/Box
COC183200	200mg/3mL	50 Pcs/Box
COC183500	500mg/3mL	50 Pcs/Box
COC186500	500mg/6mL	30 Pcs/Box
COC1861000	1000mg/6mL	30 Pcs/Box
COC18121000	1000mg/12mL	20 Pcs/Box
COC18122000	2000mg/12mL	20 Pcs/Box

Note: equivalent to Waters Sep-Pak IC18/C18, Agilent Bond Elut C18, Supelco Supelclean ENVI-18

## C18N Unendcapped Octadecyl

Extracting polar and non-polar compounds



### Specifications

Carbon content: 17%      Surface area: 300 m<sup>2</sup>/g  
 Particle size: 40 - 75 μm      Pore size: 70 Å

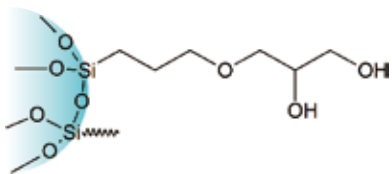
### Ordering Information

Cat.#	Description	Qty.
COC18N1100	100mg/1mL	100 Pcs/Box
COC18N3200	200mg/3mL	50 Pcs/Box
COC18N3500	500mg/3mL	50 Pcs/Box
COC18N6500	500mg/6mL	30 Pcs/Box
COC18N61000	1000mg/6mL	30 Pcs/Box
COC18N121000	1000mg/12mL	20 Pcs/Box
COC18N122000	2000mg/12mL	20 Pcs/Box

Note: equivalent to Agilent Bond Elut C18-OH

## Diol Dihydroxy

Extracting polar compounds



### Specifications

Surface area: 290 m<sup>2</sup>/g Carbon content: 5.5%

Particle size: 40-75 μm Pore size: 70 Å

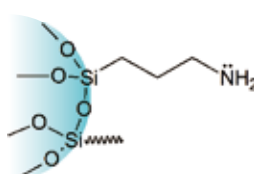
### Ordering Information

Cat.#	Description	Qty.
CODI1100	100mg/1mL	100 Pcs/Box
CODI3200	200mg/3mL	50 Pcs/Box
CODI3500	500mg/3mL	50 Pcs/Box
CODI6500	500mg/6mL	30 Pcs/Box
CODI61000	1000mg/6mL	30 Pcs/Box
CODI121000	1000mg/12mL	20 Pcs/Box
CODI122000	2000mg/12mL	20 Pcs/Box

Note: equivalent to Waters Sep-Pak Diol & Agilent Bond Elut 2OH

## NH<sub>2</sub> Aminopropyl

Extracting moderately polar and acidic compounds



### Specifications

Surface area: 200 m<sup>2</sup>/g Carbon content: 4.5%

Particle size: 40-75 μm Pore size: 70 Å

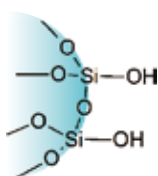
### Ordering Information

Cat.#	Description	Qty.
CONH1100	100mg/1mL	100 Pcs/Box
CONH3100	100mg/3mL	50 Pcs/Box
CONH3200	200mg/3mL	50 Pcs/Box
CONH3500	500mg/3mL	50 Pcs/Box
CONH6200	200mg/6mL	30 Pcs/Box
CONH6500	500mg/6mL	30 Pcs/Box
CONH61000	1000mg/6mL	30 Pcs/Box
CONH121000	1000mg/12mL	20 Pcs/Box
CONH122000	2000mg/12mL	20 Pcs/Box

Note: equivalent to Waters Sep-Pak NH<sub>2</sub> & Agilent Bond Elut NH<sub>2</sub>

## Silica Unbounded Silica Gel

Extracting polar compounds



### Specifications

Surface area: 480 m<sup>2</sup>/g

Particle size: 40 - 75 μm

Pore size: 70 Å

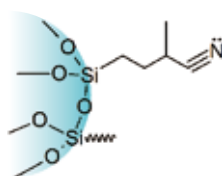
### Ordering Information

Cat.#	Description	Qty.
COSIL1100	100mg/1mL	100 Pcs/Box
COSIL3200	200mg/3mL	50 Pcs/Box
COSIL3500	500mg/3mL	50 Pcs/Box
COSIL6500	500mg/6mL	30 Pcs/Box
COSIL61000	1000mg/6mL	30 Pcs/Box
COSIL121000	1000mg/12mL	20 Pcs/Box
COSIL122000	2000mg/12mL	20 Pcs/Box

Note: equivalent to Agilent Bond Elut Silica & Waters Sep-Pak Silica

## CN Cyanopropyl

Extracting polar and non-polar compounds, enriching metal ions



### Specifications

Surface area: 280 m<sup>2</sup>/g Carbon content: 5.8%

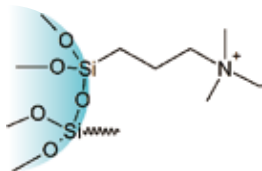
Particle size: 40 - 75 μm Pore size: 70 Å

### Ordering Information

Cat.#	Description	Qty.
COCN1100	100mg/1mL	100 Pcs/Box
COCN3200	200mg/3mL	50 Pcs/Box
COCN3500	500mg/3mL	50 Pcs/Box
COCN6500	500mg/6mL	30 Pcs/Box
COCN61000	1000mg/6mL	30 Pcs/Box
COCN121000	1000mg/12mL	20 Pcs/Box
COCN122000	2000mg/12mL	20 Pcs/Box

## SAX Strong Anion Exchange

Extracting acidic compounds



### Specifications

Surface area: 510 m<sup>2</sup>/g Particle size: 40-75 μm

Pore size: 70 Å

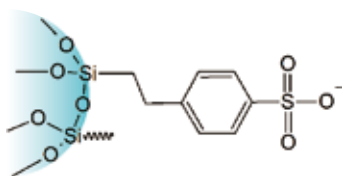
### Ordering Information

Cat.#	Description	Qty.
COSAX130	30mg/1mL	100 Pcs/Box
COSAX1100	100mg/1mL	100 Pcs/Box
COSAX3100	100mg/3mL	50 Pcs/Box
COSAX3200	200mg/3mL	50 Pcs/Box
COSAX3500	500mg/3mL	50 Pcs/Box
COSAX6200	200mg/6mL	30 Pcs/Box
COSAX6500	500mg/6mL	30 Pcs/Box
COSAX61000	1000mg/6mL	30 Pcs/Box
COSAX121000	1000mg/12mL	20 Pcs/Box
COSAX122000	2000mg/12mL	20 Pcs/Box

Note: equivalent to Supelco Supelclean LC-SAX

## SCX Strong Cation Exchange

Extracting basic compounds



### Specifications

Surface area: 510 m<sup>2</sup>/g Particle size: 40 - 75 μm

Pore size: 70 Å

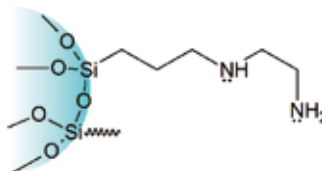
### Ordering Information

Cat.#	Description	Qty.
COSCX130	30mg/1mL	100 Pcs/Box
COSCX1100	100mg/1mL	100 Pcs/Box
COSCX3100	100mg/3mL	50 Pcs/Box
COSCX3200	200mg/3mL	50 Pcs/Box
COSCX3500	500mg/3mL	50 Pcs/Box
COSCX6200	200mg/6mL	30 Pcs/Box
COSCX6500	500mg/6mL	30 Pcs/Box
COSCX61000	1000mg/6mL	30 Pcs/Box
COSCX121000	1000mg/12mL	20 Pcs/Box
COSCX122000	2000mg/12mL	20 Pcs/Box

Note: equivalent to Waters Sep-Pak CN

## PSA Primary-Secondary Amine

Extracting strong acids, polar compounds and metal ions



### Specifications

Surface area: 500 m<sup>2</sup>/g Carbon content: 8%

Particle size: 50-75 μm Pore size: 70 Å

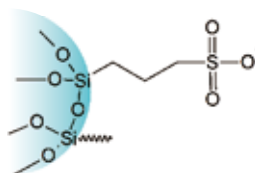
### Ordering Information

Cat.#	Description	Qty.
COPSA1100	100mg/1mL	100 Pcs/Box
COPSA3100	100mg/3mL	50 Pcs/Box
COPSA3200	200mg/3mL	50 Pcs/Box
COPSA3500	500mg/3mL	50 Pcs/Box
COPSA6200	200mg/6mL	30 Pcs/Box
COPSA6500	500mg/6mL	30 Pcs/Box
COPSA61000	1000mg/6mL	30 Pcs/Box
COPSA121000	1000mg/12mL	20 Pcs/Box
COPSA122000	2000mg/12mL	20 Pcs/Box

Note: equivalent to Agilent Bond Elut PSA

## PRS Propylsulfonic Acid

Extracting weak bases in biological fluids



### Specifications

Surface area: 310 m<sup>2</sup>/g Carbon content: 4.5%

Particle size: 40-75 μm Pore size: 70 Å

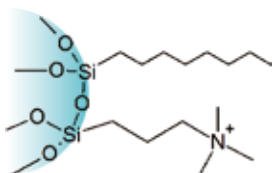
### Ordering Information

Cat.#	Format	Qty.
COPRS1100	100mg/1mL	100 Pcs/Box
COPRS3200	200mg/3mL	50 Pcs/Box
COPRS3500	500mg/3mL	50 Pcs/Box
COPRS6500	500mg/6mL	30 Pcs/Box
COPRS61000	1000mg/6mL	30 Pcs/Box
COPRS121000	1000mg/12mL	20 Pcs/Box

Note: equivalent to Agilent Bond Elut PRS

## C8/SAX Octyl/Strong Anion Exchange

Extracting acidic drugs in biological fluids



### Specifications

Surface area: 510 m<sup>2</sup>/g

Particle size: 40-75 µm

Pore size: 70 Å

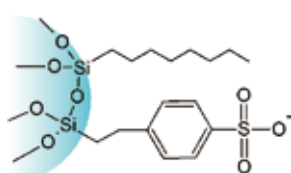
### Ordering Information

Cat.#	Description	Qty.
COC8SAX1100	100mg/1mL	100 Pcs/Box
COC8SAX3200	200mg/3mL	50 Pcs/Box
COC8SAX3500	500mg/3mL	50 Pcs/Box
COC8SAX6500	500mg/6mL	30 Pcs/Box
COC8SAX61000	1000mg/6mL	30 Pcs/Box
COC8SAX121000	1000mg/12mL	20 Pcs/Box
COC8SAX122000	2000mg/12mL	20 Pcs/Box

Note: equivalent to Agilent Bond Elut Certify II & Phenomenex Screen-A

## C8/SCX Octyl/Strong Cation Exchange

Extracting basic drugs in biological fluids



### Specifications

Surface area: 510 m<sup>2</sup>/g

Particle size: 40-75 µm

Pore size: 70 Å

### Ordering Information

Cat.#	Description	Qty.
COC8SCX1100	100mg/1mL	100 Pcs/Box
COC8SCX3200	200mg/3mL	50 Pcs/Box
COC8SCX3500	500mg/3mL	50 Pcs/Box
COC8SCX6500	500mg/6mL	30 Pcs/Box
COC8SCX61000	1000mg/6mL	30 Pcs/Box
COC8SCX121000	1000mg/12mL	20 Pcs/Box
COC8SCX122000	2000mg/12mL	20 Pcs/Box

Note: equivalent to Agilent Bond Elut Certify & Phenomenex Screen-C

## Carb-GCB Graphitized Carbon Black

Extracting herbicides in drinking water

### Specifications

Surface area: 100 m<sup>2</sup>/g

Particle size: 100-300 mesh

### Ordering Information

Cat.#	Description	Qty.
COGCB1100	100mg/1mL	100 Pcs/Box
COGCB3200	200mg/3mL	50 Pcs/Box
COGCB3500	500mg/3mL	50 Pcs/Box
COGCB6500	500mg/6mL	30 Pcs/Box
COGCB61000	1000mg/6mL	30 Pcs/Box
COGCB121000	1000mg/12mL	20 Pcs/Box
COGCB122000	2000mg/12mL	20 Pcs/Box

Note: equivalent to Agilent Bond Elut Carbon

## Carb-GCB/PSA Graphitized Carbon Black/ Primary-Secondary Amine Bilayer

Cleanup of samples in multiresidual pesticide analysis

### GCB Specifications

Surface area: 100 m<sup>2</sup>/g

Particle size: 100-300 mesh

### PSA Specifications

Surface area: 500 m<sup>2</sup>/g

Carbon content: 8%

Particle size: 40-75 µm

Pore size: 70 Å

### Ordering Information

Cat.#	Description	Qty.
COPSGC32525	250mg/250mg/3mL	50 Pcs/box
COPSGC655	500mg/500mg/6mL	30 Pcs/Box
COPSGC653	300mg/500mg/6mL	30 Pcs/Box



## Carb-GCB/NH2

### Graphitized Carbon Black/Aminopropyl Bilayer

Cleanup of samples in multiresidual pesticide analysis

#### GCB Specifications

Surface area: 100 m<sup>2</sup>/g Particle size: 100-300 mesh

#### NH2 Specifications

Carbon content: 4.5% Surface area: 200 m<sup>2</sup>/g

Particle size: 40 - 75 µm Pore size: 70 Å

#### Ordering Information

Cat.#	Description	Qty.
CONHGC32525	250mg/250mg/3mL	50 Pcs/Box
CONHGC655	500mg/500mg/6mL	30 Pcs/Box
CONHGC653	300mg/500mg/6mL	30 Pcs/Box

## PH Phenyl

Extracting non-polar compounds

#### Specifications

Surface area: 480m<sup>2</sup>/g Carbon content: 8.8%

Particle size: 40-75 µm Pore size: 70 Å

#### Ordering Information

Cat.#	Description	Qty.
COPH3500	500mg/3mL	50 Pcs/Box
COPH6500	500mg/6mL	30 Pcs/Box

Note: equivalent to Waters Sep-Pak CN

## Florisil Pesticide Grade

### Florisil

Extracting multiresidual pesticides

#### Specifications

Particle size: 150 - 250 µm

#### Ordering Information

Cat.#	Description	Qty.
COFL1100	100mg/1mL	100 Pcs/Box
COFL3200	200mg/3mL	50 Pcs/Box
COFL3500	500mg/3mL	50 Pcs/Box
COFL6500	500mg/6mL	30 Pcs/Box
COFL61000	1000mg/6mL	30 Pcs/Box
COFL121000	1000mg/12mL	20 Pcs/Box
COFL122000	2000mg/12mL	20 Pcs/Box

## ALA, ALN, ALB, Alumina

Extracting aromatic amines

#### Specifications

Surface area >150 m<sup>2</sup>/g

pH : Acidic Alumina pH 4.0

Neutral Alumina pH 7.0

Basic Alumina pH 9.5

#### Ordering Information

##### ① Acidic Alumina (ALA)

Cat.#	Description	Qty.
COALA1100	100mg/1mL	100 Pcs/Box
COALA3200	200mg/3mL	50 Pcs/Box
COALA3500	500mg/3mL	50 Pcs/Box
COALA6500	500mg/6mL	30 Pcs/Box
COALA61000	1000mg/6mL	30 Pcs/Box
COALA121000	1000mg/12mL	20 Pcs/Box
COALA122000	2000mg/12mL	20 Pcs/Box

Note: equivalent to Waters Sep-Pak Alumina-A

##### ② Neutral Alumina(ALN)

Cat.#	Description	Qty.
COALN1100	100mg/1mL	100 Pcs/Box
COALN3200	200mg/3mL	50 Pcs/Box
COALN3500	500mg/3mL	50 Pcs/Box
COALN6500	500mg/6mL	30 Pcs/Box
COALN61000	1000mg/6mL	30 Pcs/Box
COALN121000	1000mg/12mL	20 Pcs/Box
COALN122000	2000mg/12mL	20 Pcs/Box

Note: equivalent to Waters Sep-Pak Alumina-N

##### ③ Basic Alumina(ALB)

Cat.#	Description	Qty.
COALB1100	100mg/1mL	100 Pcs/Box
COALB3200	200mg/3mL	50 Pcs/Box
COALB3500	500mg/3mL	50 Pcs/Box
COALB6500	500mg/6mL	30 Pcs/Box
COALB61000	1000mg/6mL	30 Pcs/Box
COALB121000	1000mg/12mL	20 Pcs/Box
COALB122000	2000mg/12mL	20 Pcs/Box

Note: equivalent to Waters Sep-Pak Alumina-B